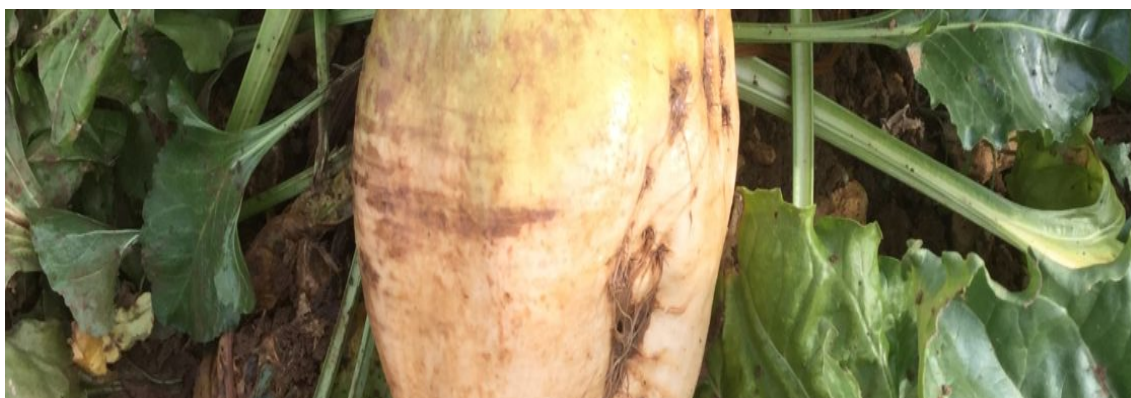


Blizzard

White skinned variety which can be harvested later



End Use: Dairy, Beef & Anaerobic Digestion

Harvesting Machinery: Sugar beet harvester

Utilisation: Lift and Clamp

Harvest: October, November & December

Blizzard has the potential to produce very high dry matter yields.

Blizzard's characteristics make it ideal for harvesting with sugar beet machinery and its high dry matter content allows growers extra harvesting flexibility.

It will produce a very palatable feed, best fed to dairy or beef animals because of the high dry matter content.

Strengths

- High DM yields
- High DM%
- Flexible harvesting dates
- Less clamp losses
- Anaerobic digestion potential

